

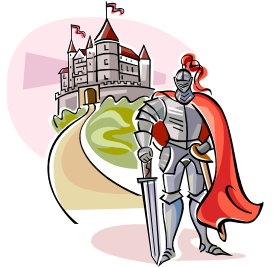


Welcome back and a Happy New Year. This half - terms focus is on 'Stories People Tell'.

We start the half- term off with a 'wow day' on Friday where the children come dressed up as character from a traditional fairy tale. During the afternoon the Owls and Puffins will be able to create new stories with characters, problems and solutions and then have the opportunity to act their stories out.

We aim to teach as much of our curriculum through our topic and in addition will be covering the following:

- In Maths we will be following the New National Curriculum, and where appropriate will link this with our topic. This half- term we will work on time, measure, place value and addition and subtraction.
- In Literacy we will continue to have daily phonic sessions including handwriting and spelling. We will be focussing on different stories and using them to inspire and develop our writing.



The stories we will be focusing on this half-term are:

- Jack and the Beanstalk
- Rapunzel
- The Princess and the Dragon.
- In history we will be looking at castles, where they were located and how people lived. We will also be looking at and researching Bedford Castle.
- In Art the children will be looking at the artist Paul Klee. They will study his picture of 'The Castle and the Sun' and create their own pictures.
- In Science we will be learning about how plants grow.
- In PE we will be covering dance and gym.  
*Owls PE lessons will be on a **Wednesday morning and Friday afternoon**. Please ensure your child has appropriate kit including trainers or plimsolls, jogging tops and bottoms. It really helps us if, on PE days, long hair is tied back and if earrings are taken out before coming to school.*
- In ICT we will be looking at instructions and how to give instructions.
- In PSHCE our focus is 'Going for goals'.
- In RE we will be thinking about how we show consideration for others.



**Mrs Pottruff will be teaching Music and RE on Thursday afternoons.**

This half-term value is co-operation and unity.

Drop ins are a time for you to catch us, look at your child's work, discuss any concerns etc.

I am looking forward to an enjoyable and inspiring half term,  
Mrs Fuller

